

water system protection webcams

D.T2.4.1





Table of contents

1.	Introduction.....	3
2.	Webcam Hoge Bat Roermond.....	5
2.1.	Location measure point (WaterstandLimburg - WaterstandLimburg).....	5
2.2.	Installation of webcam on the switchboard of the measurement point	5
2.3.	Webcam image/stream.....	6
3.	Webcam reservoir Nijswiller	7
3.1.	Location measure point (WaterstandLimburg - WaterstandLimburg).....	7
3.2.	Installation of webcam on the switchboard of the measurement point	7
3.3.	Webcam image/stream.....	8
4.	Webcam Geleenbeek – Munstergeleen (Sittard).....	9
4.1.	Location measure point (WaterstandLimburg - WaterstandLimburg).....	9
4.2.	Installation of webcam on the switchboard of the measurement point	9
4.3.	Webcam image/stream.....	10
5.	Webcam Walram stuw (operable weir)Valkenburg	11
5.1.	Location measure point (WaterstandLimburg - WaterstandLimburg).....	11
5.2.	Installation of webcam on the switchboard of the measurement point	11
5.3.	Webcam image/stream 1.....	12
5.4.	Webcam image/stream 2.....	12
6.	Webcam Slenaken Broekermolen	13
6.1.	Location measure point (WaterstandLimburg - WaterstandLimburg).....	13
6.2.	Installation of webcam on the switchboard of the measurement point	13
6.3.	Webcam image/stream.....	14
7.	Webcam Gulp Azijn fabriek (Gulpen)	15
7.1.	Location measure point (WaterstandLimburg - WaterstandLimburg).....	15
7.2.	Installation of webcam on the switchboard of the measurement point	15
7.3.	Webcam image/stream 1.....	16
7.4.	Webcam image/stream 1.....	16

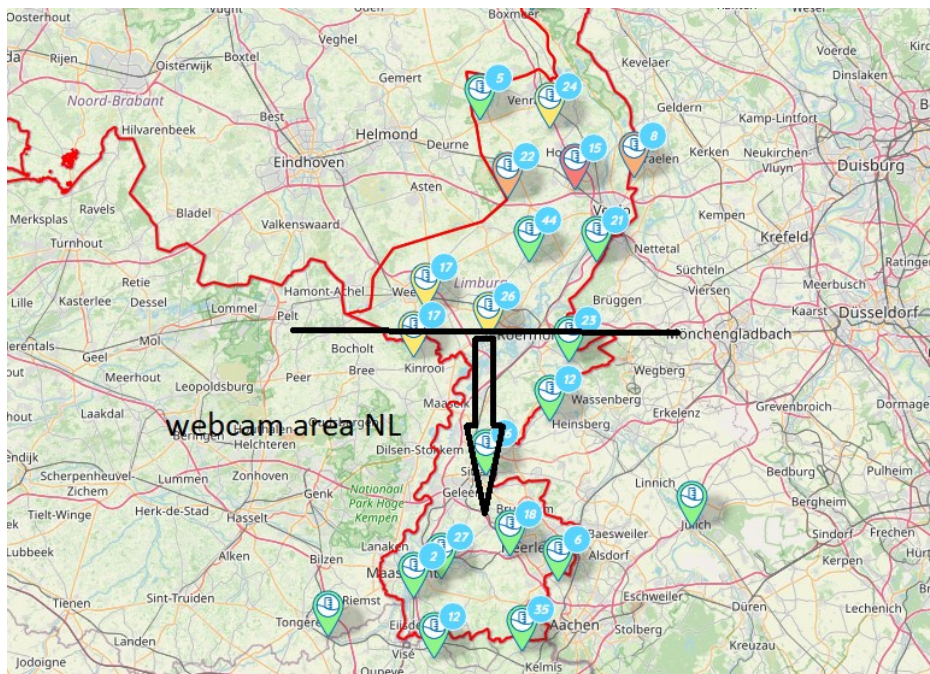
1. Introduction

This report is an elaboration of deliverable D.T.2.4.1, in which 6 water system protection webcams have been implemented. For each location, there is an image of the site, a photo of the control box including the Interreg sticker, and the webcam feed.

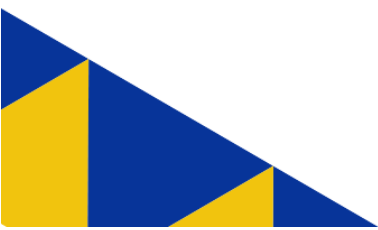
The streams of the webcams are operation in de CRK of Watherboard Limburg.



Screenshot webcam streams

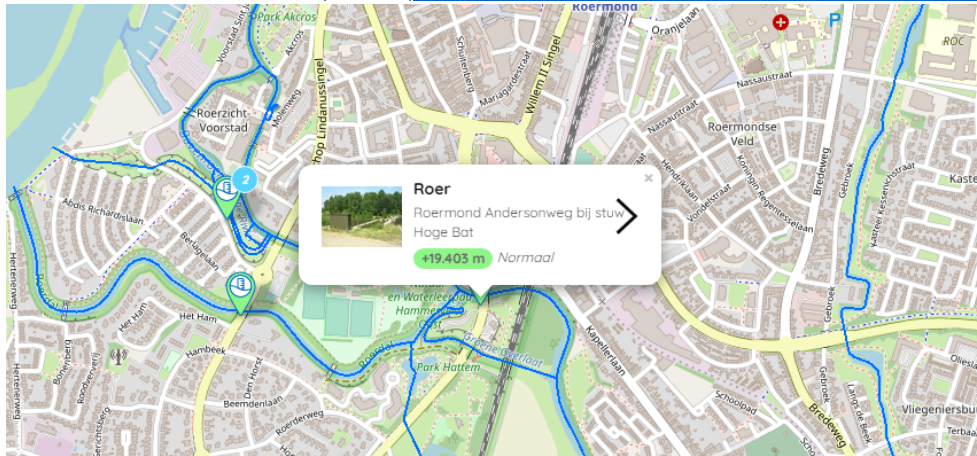


Area webcams WL



2. Webcam Hoge Bat Roermond

2.1. Location measure point ([WaterstandLimburg - WaterstandLimburg](#))



2.2. Installation of webcam on the switchboard of the measurement point

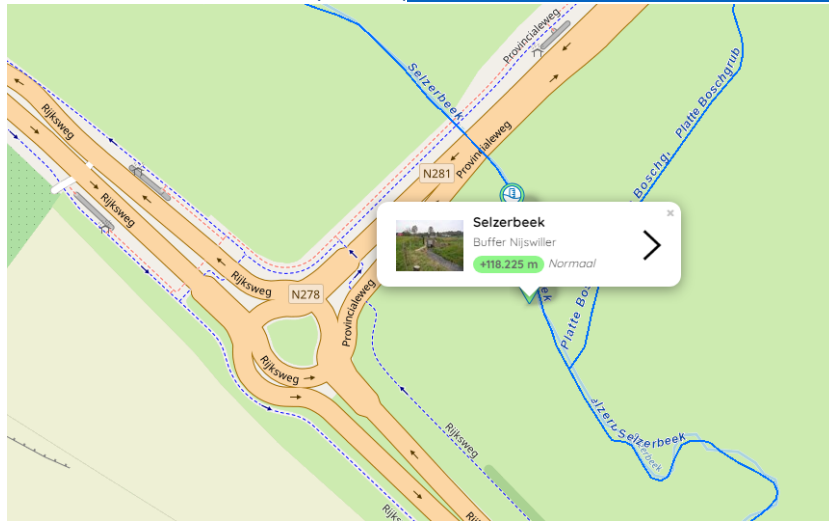


2.3. Webcam image/stream



3. Webcam reservoir Nijswiller

3.1. Location measure point ([WaterstandLimburg - WaterstandLimburg](#))



3.2. Installation of webcam on the switchboard of the measurement point

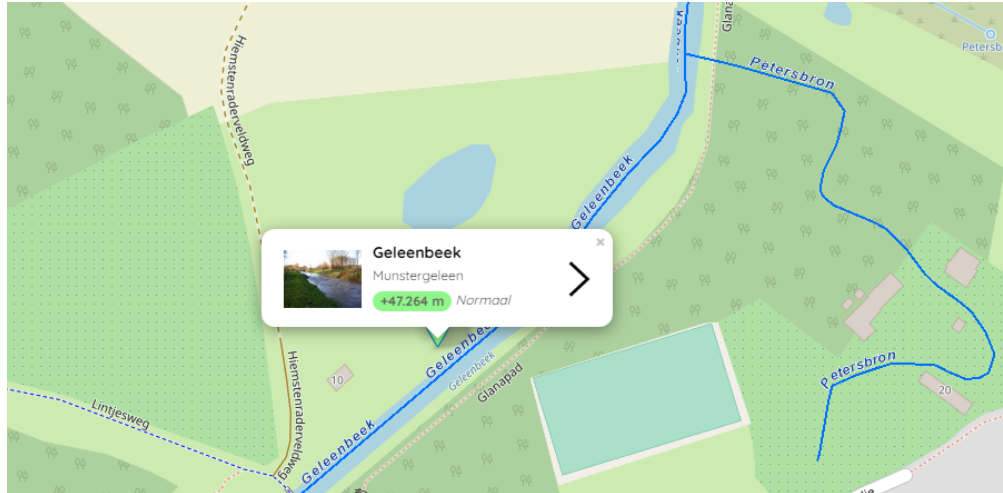


3.3. Webcam image/stream



4. Webcam Geleenbeek – Munstergeleen (Sittard)

4.1. Location measure point ([WaterstandLimburg - WaterstandLimburg](#))



4.2. Installation of webcam on the switchboard of the measurement point

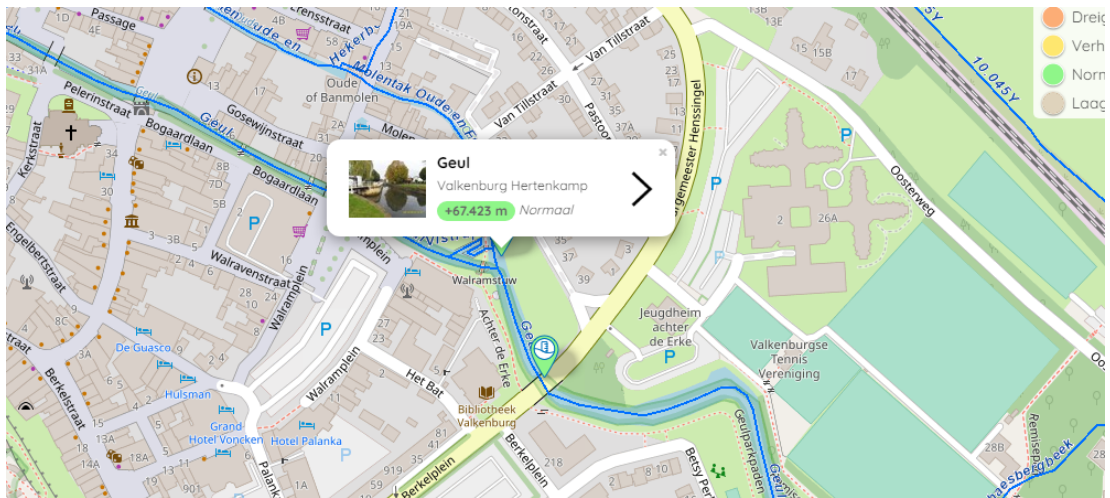


4.3. Webcam image/stream



5. Webcam Walram stuw (operable weir)Valkenburg

5.1. Location measure point ([WaterstandLimburg - WaterstandLimburg](#))



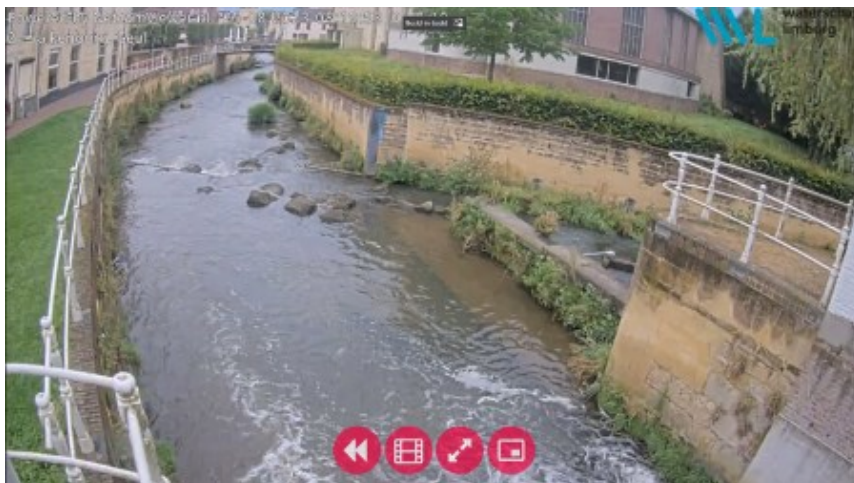
5.2. Installation of webcam on the switchboard of the measurement point



5.3. Webcam image/stream 1

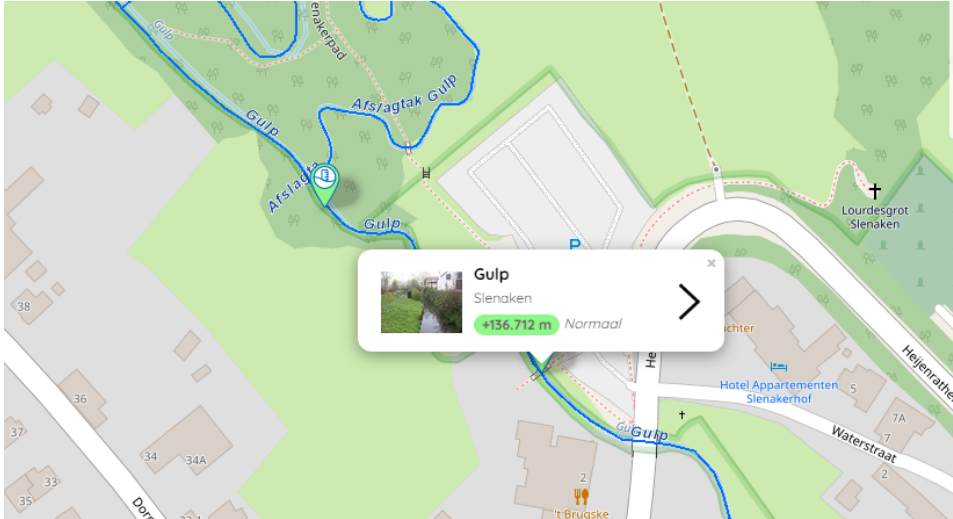


5.4. Webcam image/stream 2



6. Webcam Slenaken Broekermolen

6.1. Location measure point ([WaterstandLimburg - WaterstandLimburg](#))



6.2. Installation of webcam on the switchboard of the measurement point

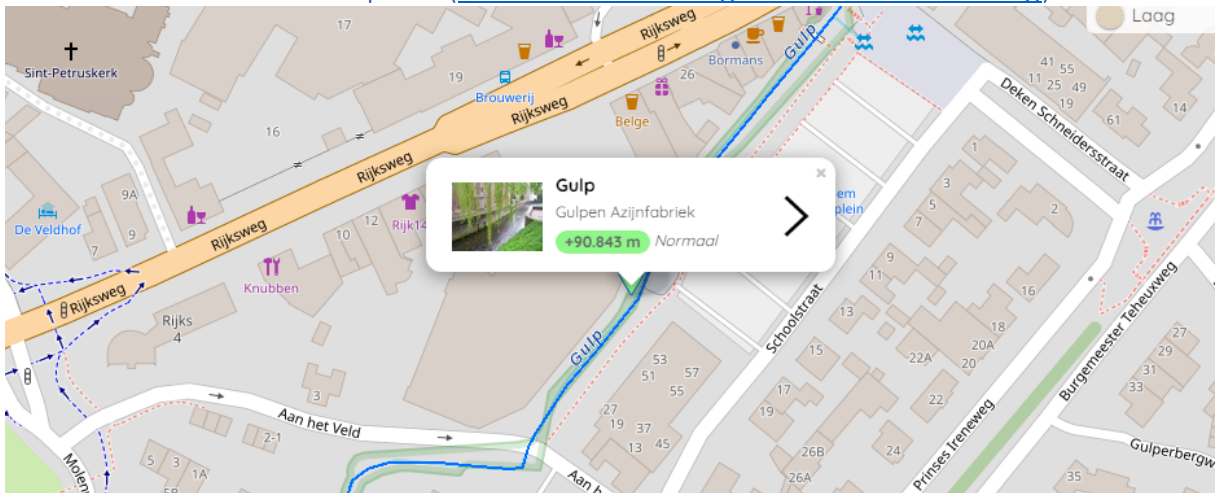


6.3. Webcam image/stream



7. Webcam Gulp Azijn fabriek (Gulpen)

7.1. Location measure point (WaterstandLimburg - WaterstandLimburg)



7.2. Installation of webcam on the switchboard of the measurement point



7.3. Webcam image/stream 1



7.4. Webcam image/stream 1

